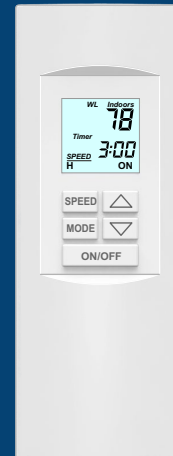


The WLM Radio Receiver plugs into the WTT Wall Control and provides remote control of the whole house fan using the RTT Remote from anywhere within the home. Range is 100 feet.

Take a few minutes to read the manual and get familiar with the WTT Wall Control operation.

Before operating your whole house fan, be sure to open windows and close fireplace dampers. Refer to your whole house fan manual for more information regarding operating your fan.



RTT Remote Control



WLM Receiver

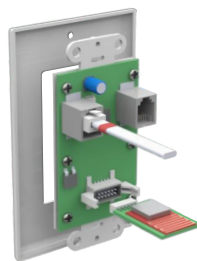
This WLM-RTT is compatible with WTT Wall Controls with Version 409WLD. Compatibility can be verified by checking the product label on the back of the WTT Wall Control. If not compatible, please contact eControls.

The fan can be controlled by either the WTT Wall Control or the RTT Remote. Whichever control starts fan operation, is the control in charge. If the other control is used to make a change during fan operation, such as changing the fan speed, then that control now becomes the control in charge.

Step 1. Install the WLM Receiver

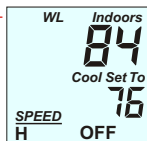
- Make sure the WLM Receiver is oriented with the RED chip side up as illustrated. Use the guide to insert the module.

Plug the WLM Receiver into the connector on the back of the WTT Wall Control, using the guide to insert the receiver.



Module is RED side up.

Verify that WL is flashing. This indicates that the WLM module is plugged into the WTT correctly. If WL is not flashing, verify that the WLM is oriented correctly (RED side up) and that it's plugged in completely.



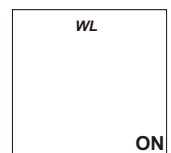
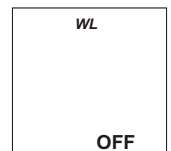
Step 2. Power the RTT

Use the pull tab on the back of the RTT Wireless Remote to activate the AAA batteries already installed. You should see the LCD display.

Step 3. Link RTT and Wall Control

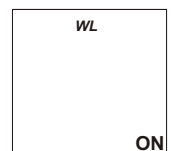
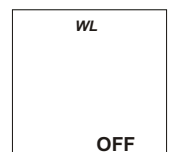
At the WTT Wall Control

- **Press and Hold** the **MODE** key to access the options.
- **Press and Release** the **MODE** key until the WL Linking option is displayed.
- **Press** the UP key to display WL ON. The change is saved when the backlight goes off.

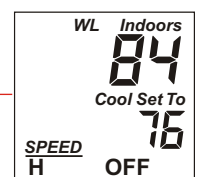


At the Remote

- **Press and Hold** the **MODE** key to display WL OFF.
- **Press** the UP key to display WL ON. The change is saved when the backlight goes off.



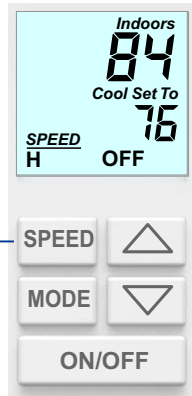
Once the WTT Wall Control and the RTT Wireless Remote are linked, WL stops blinking and displays as solid.



FAN OPERATION

CHANGE FAN SPEED

Press and Hold the **SPEED** key to cycle through the available speed settings then release at your desired speed.

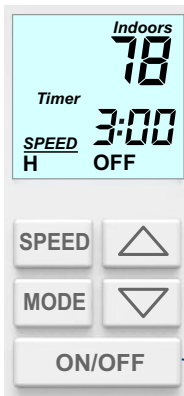


TIMER CONTROL - Turn Fan ON or OFF

Timer Control operates using a timer set from 1 to 16 hours (factory set to 3 hours). You can also set the timer to Off so the fan runs continuously.

SELECT TIMER CONTROL MODE

Press and Release the **MODE** key then Press the **UP** key to select Timer Control. Display will indicate **Timer**.

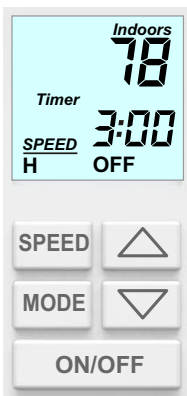


Press the **ON/OFF** Key to turn the fan ON.

Fan turns on and runs until the timer expires. ON blinks while the fan is running.

Press the **ON/OFF** Key to turn the fan OFF at any time.

TIMER CONTROL - Adjust Timer Setting



Press and Hold the **UP** or **DOWN** key to adjust the timer setting.

Adjusting the Timer while the Fan is ON sets a Timer for just that operation.

Adjusting the Timer while the Fan is OFF sets the Timer setting as the default that will be used each time the fan is turned on.

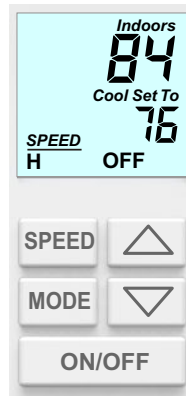
The timer can also be turned off. Press and Hold the **DOWN** key until OFF is displayed. The fan will run continuously until you turn the fan OFF.

TEMP CONTROL - Turn Fan ON or OFF

In Temperature Mode, the Indoor temperature and the Cool Set To temperature are used to control fan operation. The ON/OFF key is used to start temperature operation. The fan will turn on when the Cool Set To temperature is below the Indoors temperature. Once the Indoors temperature drops 2° below the Cool Set To temperature the fan will turn off. If the Indoors temperature rises 2° above your Cool Set To temperature, the fan will turn back on to continue to cool your home. The Cool Set To Temperature is adjustable from 50° to 95°.

SELECT TEMPERATURE CONTROL MODE

Press and Release the **MODE** key then Press the **UP** key to select Temperature Control. Display will indicate **Cool Set To**.



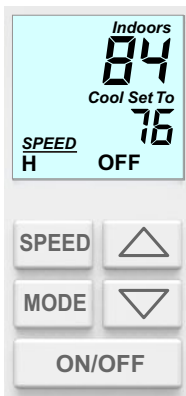
Press the **ON/OFF** key to turn the fan ON.

Fan turns on and runs until the Indoors Temperature drops just below the Set To Temperature and then turns off. ON blinks while the fan is running and displays as solid when the fan is idle.

Press the **ON/OFF** key to turn the fan OFF at any time

Temperature Control includes a Safety Timer that runs in the background. For more information, see *OPTION Safety Timer* on Page 3

TEMP CONTROL - Adjust Set To Temperature



Press and Hold the **UP** or **DOWN** key to adjust the Cool Set To Temperature.

Pat. Pending



Made in
the USA

eControls

26072 Merit Circle #110 / Laguna Hills, CA 92653
949-916-0945 Fax 949-458-8502 www.eControlsUSA.com